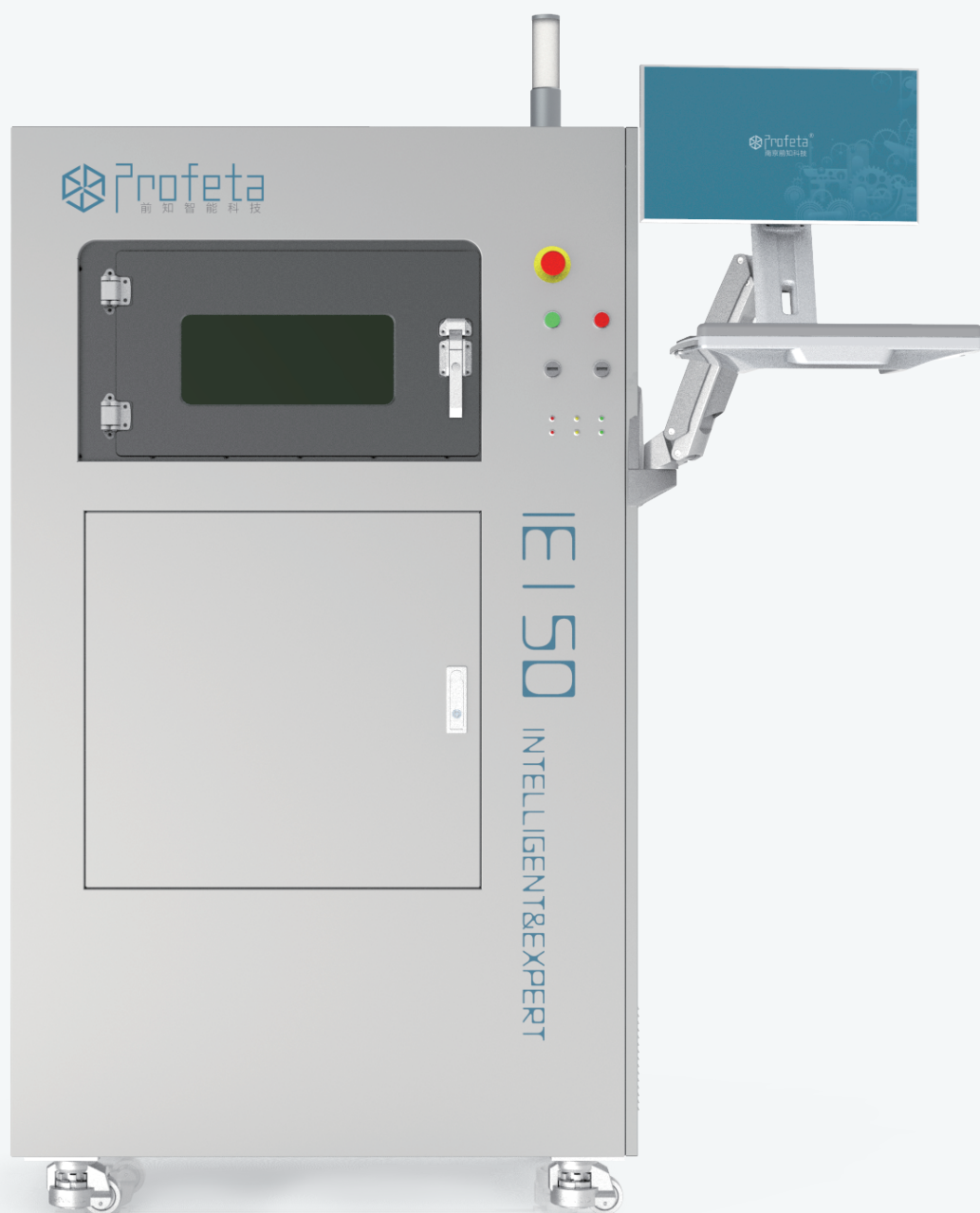


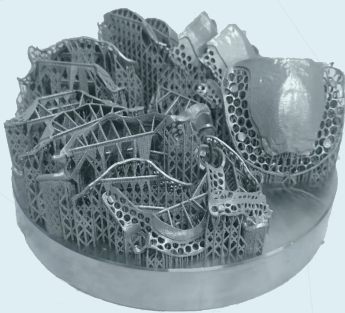
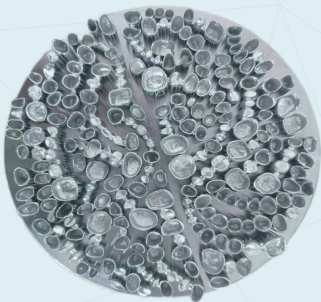
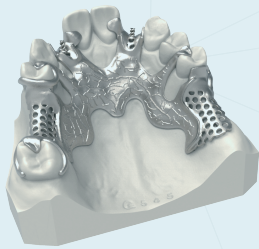
# Intelligent & Expert Printer

Best Selling Machine With Dual Laser



## Intelligent & Expert Printer (IE150)

Building Volume	Φ158 mm, z=70 mm
Layer Thickness	30/40 μm
Scanning Speed	15m/s(max)
Productivity	220 copings/3.5-4.5 hours 15 RPD frames/3-3.5 hours
Laser Type	Yb-fiber laser*2, 200W/300W
Laser Beam Diameter	40~60 μm
Power	AC220V, 16A 3.5 KW
Shielding Gas	Argon/Nitrogen
Machine Dimension	1070*670*1750 mm
Weight	500 kg
Operating Temperature	18~30 °C
Materials	CoCr, Ti, TC4
Applicable Products	Copings, RPD frames, post & core, surgical guide, orthodontic appliance etc.



### Dedicated Dental Metal 3D Printer

- Equipped with **dual lasers** for faster printing speed;
- Larger building volume (Φ158 mm, z=70 mm) for higher production;
- **Higher powder utilization;**
- Support two printing layer thickness (30/40μm);
- Proved stability in domestic and global market.

### One-stop Solution Package

- The one-stop solution package includes design software, slicing software, furnace and nitrogen generator;
- Our solution achieves synergy effects for better quality and efficiency.

### Customer Value

- Designed for **all scale dental labs;**
- Higher powder utilization, lower production cost per unit;
- Proved machine stability.

Tech4dent Kft.

Web: [www.tech4dent.hu](http://www.tech4dent.hu)

Email: [info@tech4dent.com](mailto:info@tech4dent.com)

Add: 1152 Budapest, Szentmihályi út 171.