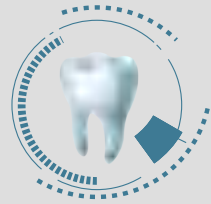


CATALOG



Value of Digital Dentistry

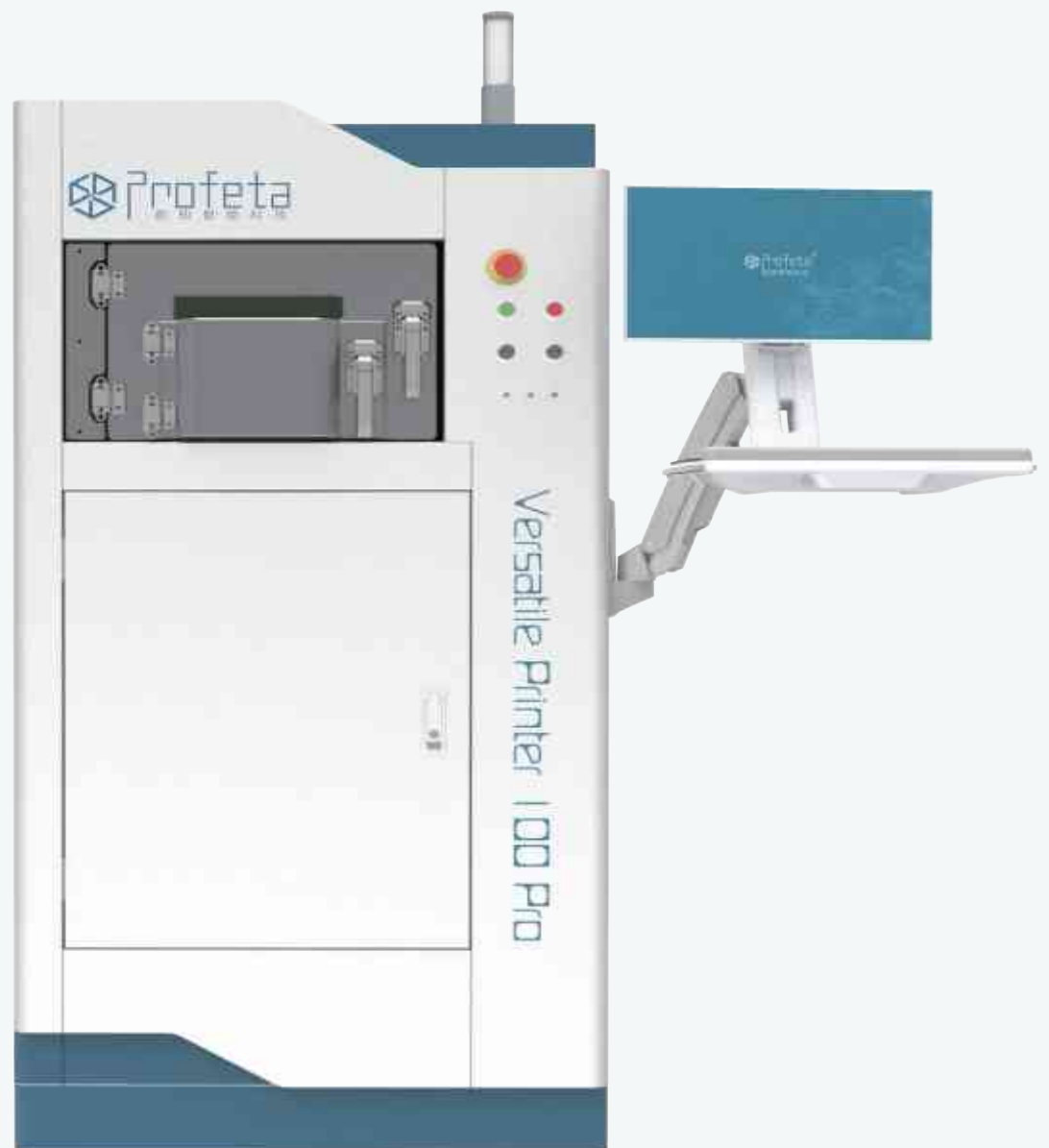
High Quality

High Intelligence

High Efficiency

Versatile Printer 100 Pro

Dual Mode Machine For Easy Powder Switching



Versatile Printer 100 Pro (VP100 Pro)

Building Volume	Φ120mm, z=70mm
Layer Thickness	20-50 μm
Scanning Speed	15m/s(max)
Productivity	130copings/4-5 hours 10RPD frames/3.5-4 hours
Laser Type	Yb-fiber laser, 200W/300W
Laser Beam Diameter	40-60 μm
Power	AC220V, 12A 2.5KW
Shielding Gas	Argon/Nitrogen
Machine Dimension	900*680*1760mm
Weight	480kg
Operating Temperature	18-30 °C
Materials	CoCr, Ti, TC4
Applicable Products	Copings, RPD frames, implant bar, surgical guide, orthodontic appliance etc.



Dedicated Dental Metal 3D Printer

- **Dual-mode** printer supports Cobalt-Chromium and Titanium, and the switching time is only 45 minutes;
- Easy to start with Cobalt-Chromium mode and be able to upgrade to dual-mode later on;
- Equipped with glove box and built-in cleaner to implement **closed powder cleaning** and to avoid harmful dust;
- High printing quality for RPD frames, copings, implant bar, surgical guide, orthodontic appliance etc;
- Proved stability in domestic and global market.

One-stop Solution Package

- The one-stop solution package includes design software, slicing software, furnace, automatic screening cabinet and nitrogen generator;
- Our solution achieves synergy effects for better quality and efficiency.

Customer Value

- Designed for **small-middle scale dental labs**, and greatly supports all scale labs which require frequent powder switching;
- Compact machine, requires minimum facility area, and easy to transport through elevator;
- One dual-mode printer serves the purpose of two machines;
- Closed powder cleaning function is designed for better HSE.

Profeta Intelligent Technology Co., Ltd, China

Web: www.profeta3d.com

Email: service@profeta3d.com

Add: No.12 Mozhou East Road, Jiangning, Nanjing, China

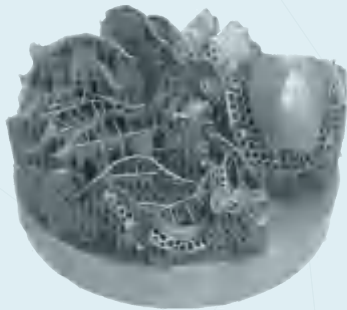
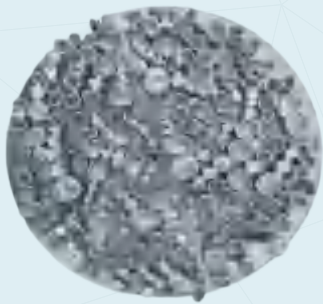
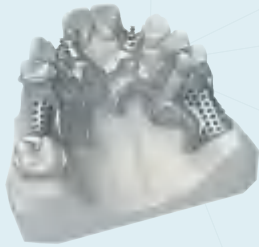
Intelligent & Expert Printer

Best Selling Machine With Dual Laser



Intelligent & Expert Printer (IE150)

Building Volume	Φ158 mm, z=70 mm
Layer Thickness	20-50 μm
Scanning Speed	15m/s(max)
Productivity	220 copings/3.5-4.5 hours 15 RPD frames/3-3.5 hours
Laser Type	Yb-fiber laser*2, 200W/300W
Laser Beam Diameter	40~60 μm
Power	AC220V, 16A 3.5 KW
Shielding Gas	Argon/Nitrogen
Machine Dimension	1070*670*1750 mm
Weight	500 kg
Operating Temperature	18~30 °C
Materials	CoCr, Ti, TC4
Applicable Products	Copings, RPD frames, implant bar, surgical guide, orthodontic appliance etc.



Dedicated Dental Metal 3D Printer

- **High-end components;**
- Equipped with **dual lasers** for faster printing speed;
- Larger building volume (Φ158 mm, z=70 mm) for higher production;
- **Higher powder utilization;**
- Support two printing layer thickness (20-50μm);
- Proved stability in domestic and global market.

One-stop Solution Package

- The one-stop solution package includes design software, slicing software, furnace and nitrogen generator;
- Our solution achieves synergy effects for better quality and efficiency.

Customer Value

- Designed for **all scale dental labs;**
- Higher powder utilization, lower production cost per unit;
- Proved machine stability.

Profeta Intelligent Technology Co., Ltd, China

Web: www.profeta3d.com

Email: service@profeta3d.com

Add: No.12 Mozhou East Road, Jiangning, Nanjing, China

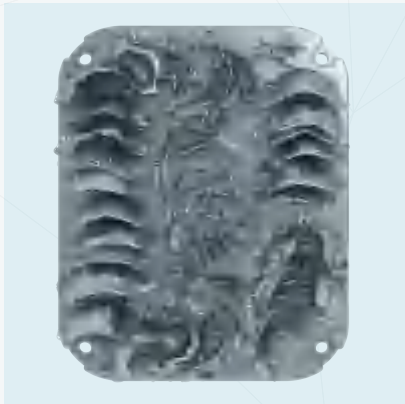
Intelligent & Supreme Printer

Main Force Machine For Highest Volume Production



Intelligent & Supreme Printer (IS200)

Building Volume	250 mm*180 mm*70 mm (X, Y, Z)
Layer Thickness	20-50 μm
Scanning Speed	15m/s(max)
Productivity	400 copings/4.5-5.5 hours 36 RPD frames/4.5-5.5 hours
Laser Type	Yb-fiber laser*2, 200W/300W
Laser Beam Diameter	40-60 μm
Power	AC220 V, 25 A 5.5 KW
Shielding Gas	Argon/Nitrogen
Machine Dimension	1350*980*1850 mm
Weight	1300 kg
Operating Temperature	18-30 °C
Materials	CoCr, Ti, TC4
Applicable Products	Copings, RPD frames, implant bar, surgical guide, orthodontic appliance etc



Dedicated Dental Metal 3D Printer

- Main force model for highest volume production;
- High-end machine with advanced algorithm and components brings **the fastest printing speed** (4.5-5.5hrs for 400 copings/36 RPD frames);
- The building volume (250*180*70mm) brings **the highest volume per batch** and reduces times of operations by 50%;
- **The highest powder utilization** (500-600 copings or 50-60 RPD frames/kg of powder);
- Proved stability in domestic and global market.

One-stop Solution Package

- The one-stop solution package includes design software, slicing software, furnace, automatic screening cabinet and nitrogen generator;
- Our solution achieves synergy effects for better quality and efficiency.

Customer Value

- Designed for **high production labs and printing centers**;
- The highest volume production, minimum personnel cost and the highest powder utilization achieve the lowest cost per unit production;
- Proved machine stability.

Profeta Intelligent Technology Co., Ltd, China

Web: www.profeta3d.com

Email: service@profeta3d.com

Add: No.12 Mozhou East Road, Jiangning, Nanjing, China

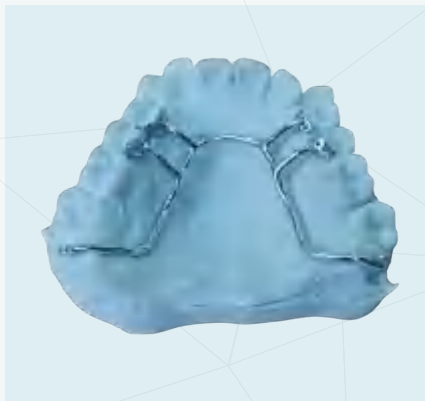
Premium Dental Printer

Dual Mode & Easy Powder Switching



S100

Building Volume	Φ120mm, z=70mm
Layer Thickness	20-50 μm
Scanning Speed	15m/s(max)
Productivity	130copings/3.5-4.5 hours 10RPD frames/3-3.5 hours
Laser Type	Yb-fiber laser, 200W/300W
Laser Beam Diameter	40-60 μm
Power	AC220V-240V, 16A 2.5KW
Shielding Gas	Argon/Nitrogen
Machine Dimension	900*640*2030mm
Weight	490kg
Operating Temperature	18-30
Materials	CoCr, Ti, TC4
Applicable Products	Copings, RPD frames, implant bar, surgical guide, orthodontic appliance etc.



Dedicated Dental Metal 3D Printer

- **High-end components;**
- **Dual-mode** printer supports Cobalt-Chromium and Titanium, and the switching time is only 45 minutes;
- Easy to start with Cobalt-Chromium mode and be able to upgrade to dual-mode later on;
- Equipped with glove box and built-in cleaner to implement **closed powder cleaning** and to avoid harmful dust;
- Proved reliable & predictable quality in domestic and global market;
- Closed powder cleaning function is designed for better HSE.

One-stop Solution Package

- The one-stop solution package includes design software, slicing software, furnace, automatic screening cabinet and nitrogen generator;
- Our solution achieves synergy effects for better quality and efficiency.

Customer Value

- Designed for **small-middle scale dental labs**, and greatly supports all scale labs which require frequent powder switching;
- Compact machine, requires minimum facility area, and easy to transport through elevator;
- One dual-mode printer serves the purpose of two machines.

Profeta Intelligent Technology Co., Ltd, China

Web: www.profeta3d.com

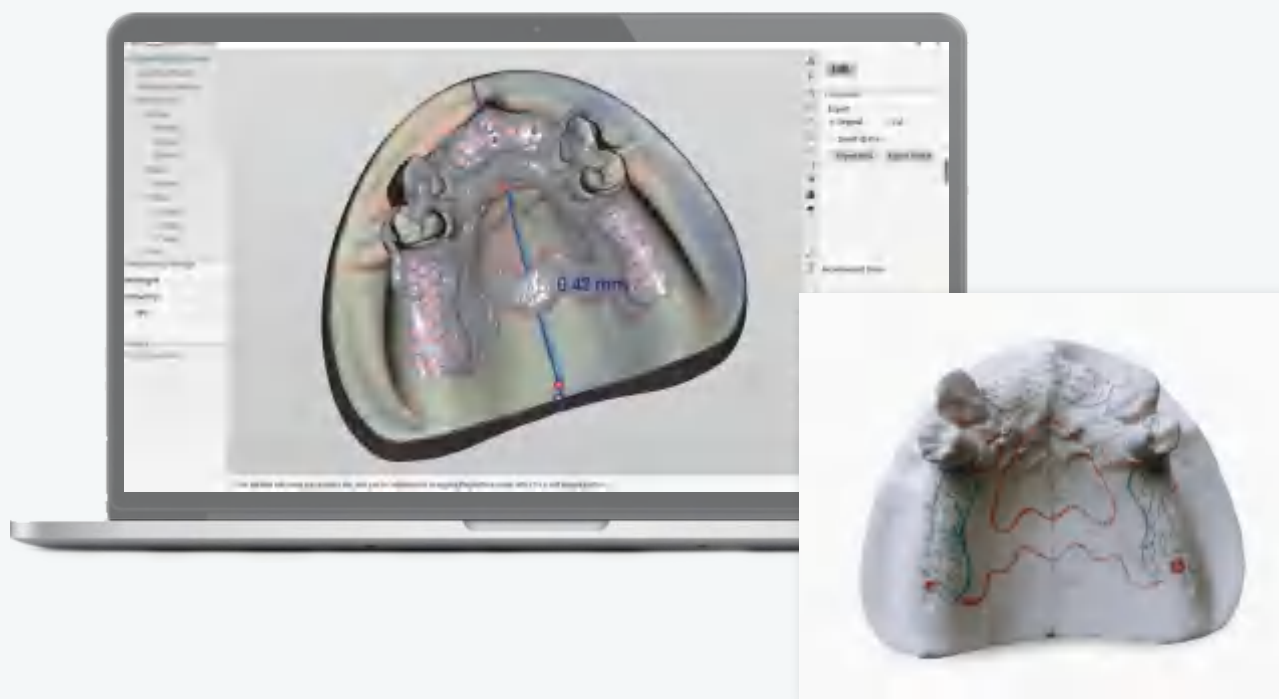
Email: service@profeta3d.com

Add: No.12 Mozhou East Road, Jiangning, Nanjing, China



iPDenture

Intelligent Partial Denture Design Software



Collaboration



AI assistant



Easy to use

About iPD

iPDenture (iPD) software is the first and only removable partial denture design software in China developed by Profeta Intelligent Technology Co., Ltd.

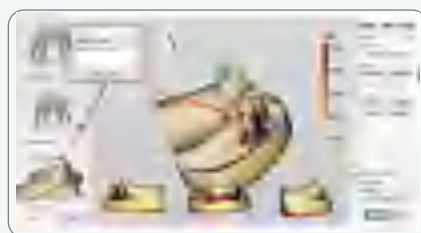
- **User friendly**, easy to learn and easy to use;
- **Powerful options for dentists**, including AI assistant, surgical guide for guiding plane preparation and e-order for denture;
- **Powerful function for collaboration**, including communication between dentists and technicians, group collaboration support between technicians, and support work from home or office;
- **Synergy between design software, slicing software and 3D printing**, smart data exchange to support effective typesetting, high quality printing and high powder utilization;
- **Open software system**, capable to make customization features based on local demands.

Features

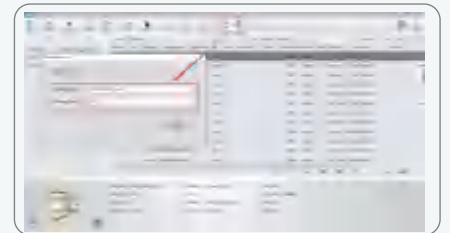
1 AI assistant



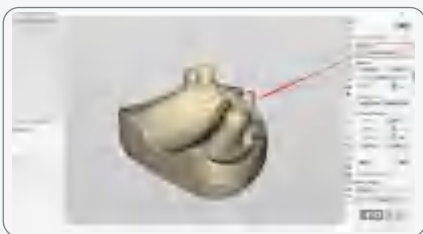
2 E-order for denture



3 Collaboration support



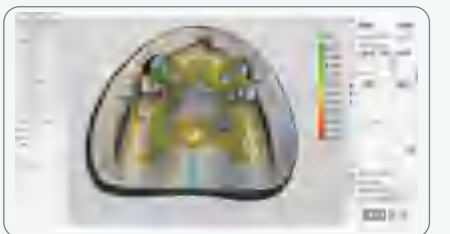
4 Automatic fix of dental model



5 Carving for post dam



6 Real-time thickness measurement



7 Smart data exchange for synergy



8 Radiotherapy protector



9 More features waiting for you to discover



Profeta Intelligent Technology Co., Ltd, China

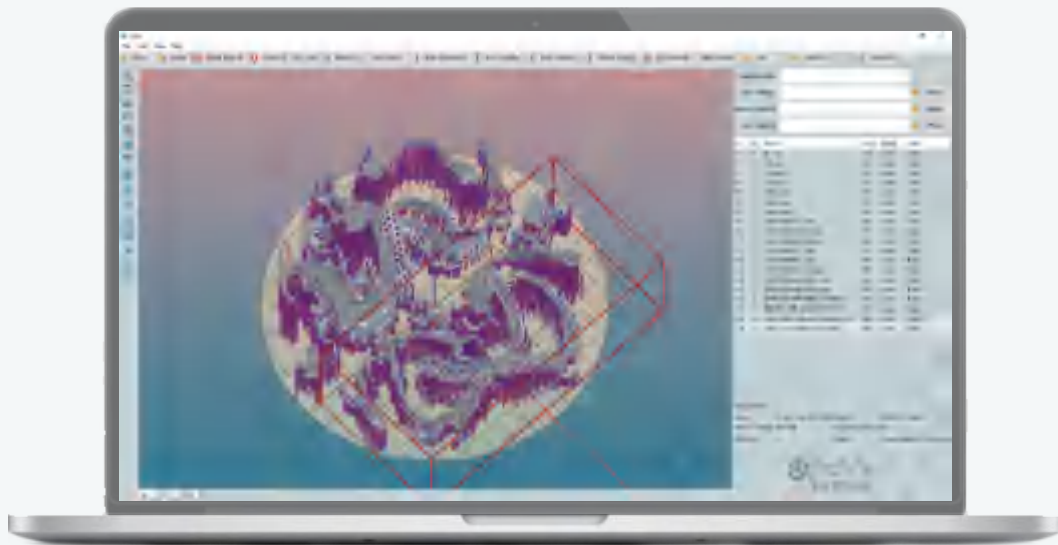
Web: www.profeta3d.com

Email: service@profeta3d.com

Add: No.12 Mozhou East Road, Jiangning, Nanjing, China

P3DS

Typesetting and Slicing Software



High effective
typesetting



High efficient
printing



High efficient
unit separation

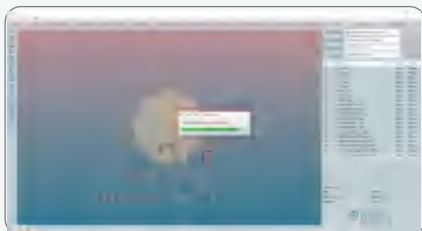
About P3DS

P3DS is a dental dedicated typesetting and slicing software developed by Profeta Intelligent Technology Co., Ltd.

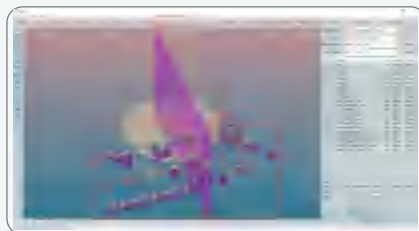
- **High effective typesetting**, through process automation;
- **High efficient printing**, through support reduction and advanced scheduling algorithm;
- **High efficient unit separation**, through automatic tag addition, best for printing center.

Features

1 Automatic posture adjustment



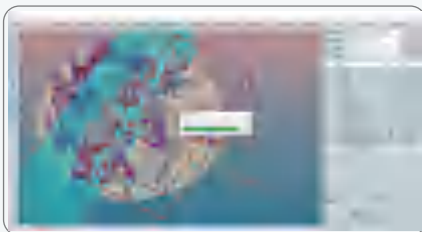
2 Automatic wall-support addition



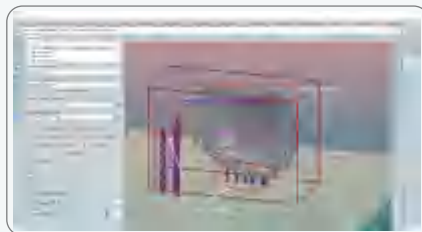
3 Automatic typesetting



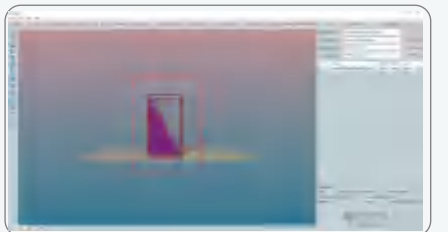
4 Automatic support addition



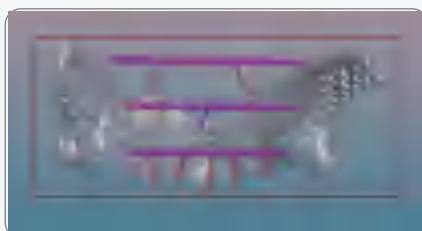
5 Less support addition



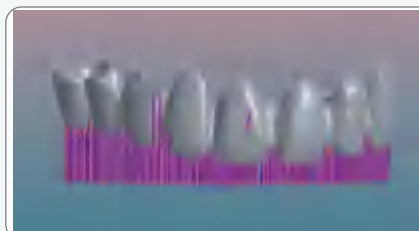
6 High-angle posture printing



7 Hollow cross bar



8 Automatic tag addition



9 More features waiting for you to discover



Profeta Intelligent Technology Co., Ltd, China

Web: www.profeta3d.com

Email: service@profeta3d.com

Add: No.12 Mozhou East Road, Jiangning, Nanjing, China

After-sales Service & Consulting



Training for Installation

- Customer service for machine installation and commissioning;
- Training for RPD design, typesetting and 3D printer operation.

After-sales Service

- 7 days *12 hours online service, and response within 24 hours;
- Free upgrade of embedded software, and free machine calibration;
- Remote diagnosis system provided;
- Warranty and maintenance service provided;
- Assigned contact person for each customer.

Digital Transformation Service

Through close cooperation with top dental labs, Profeta Intelligent Technology has accumulated rich practice experience in the digital transformation process. We could facilitate your organization to define your business values and accelerate your transformation process from conventional to digital production successfully.



Profeta Intelligent Technology Co., Ltd, China

Web: www.profeta3d.com

Email: service@profeta3d.com

Add: No.12 Mozhou East Road, Jiangning, Nanjing, China

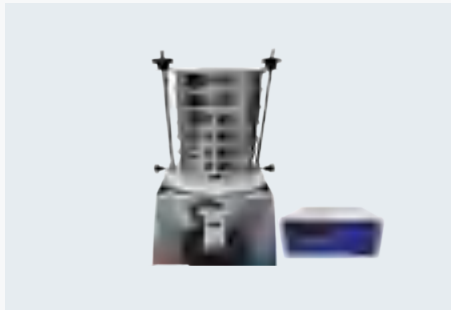


Auxiliary Equipments

Designed For Higher Efficiency And Better Quality



Auxiliary Equipments



Ultrasonic sieving instrument



Bandsaw



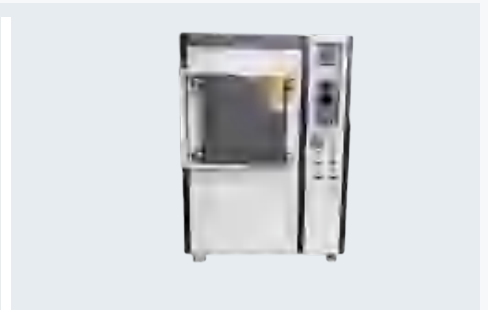
Grinding machine



Automatic screening cabinet
(for Ti or TC4)

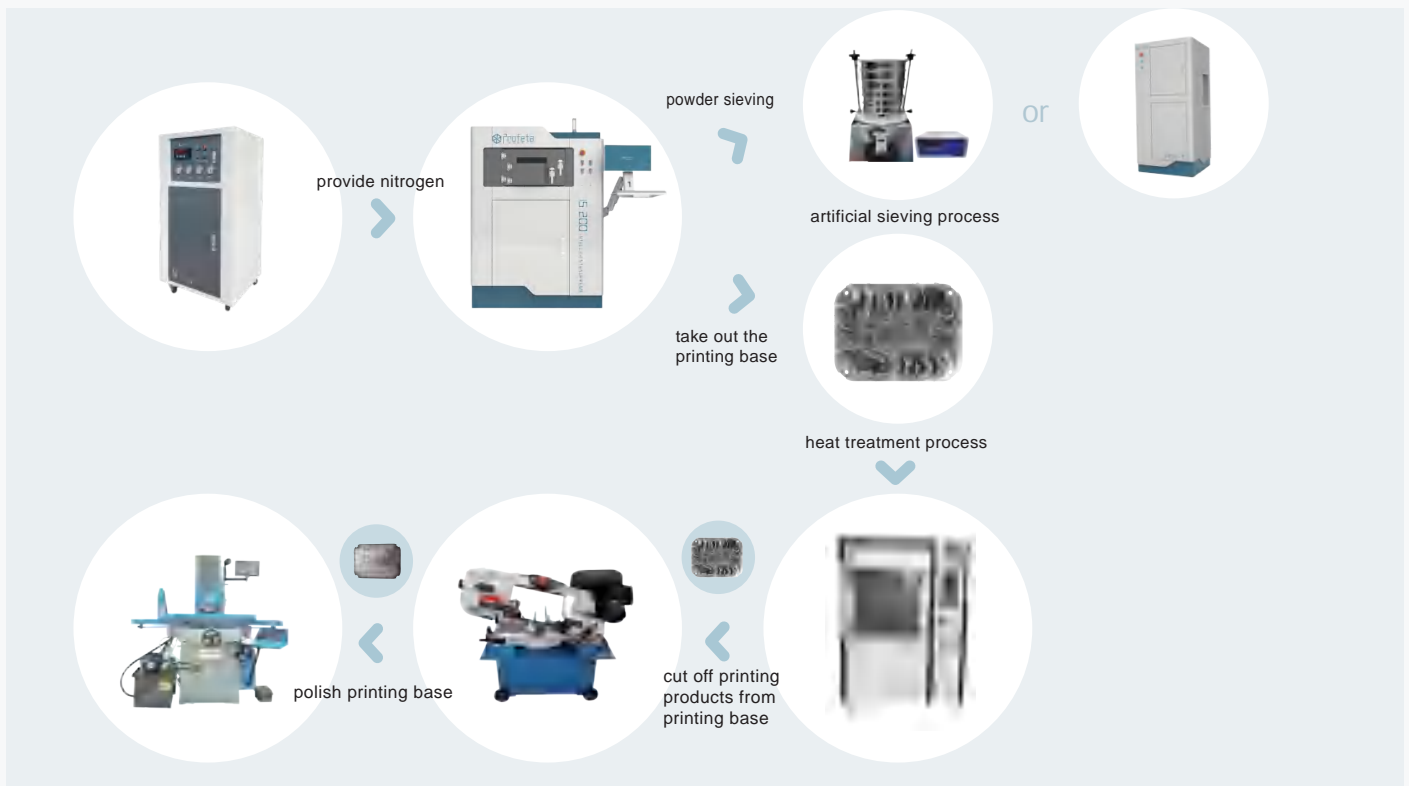


Nitrogen gas generator
(for CoCr)



Atmosphere heat treatment furnace

Collabrate with Printing Machine



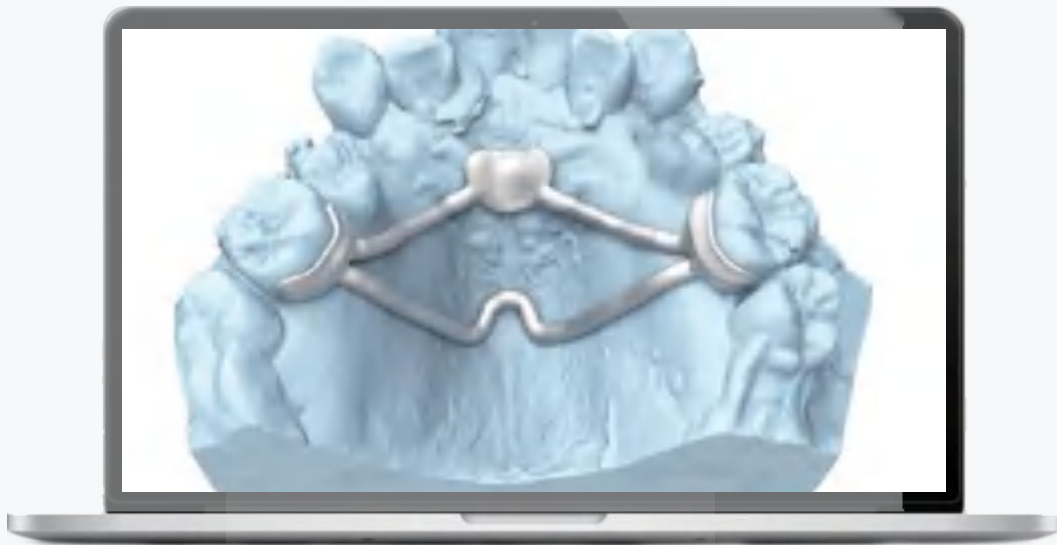
Profeta Intelligent Technology Co., Ltd, China

Web: www.profeta3d.com

Email: service@profeta3d.com

Add: No.12 Mozhou East Road, Jiangning, Nanjing 211111, China

Clinical Applications



Synergy

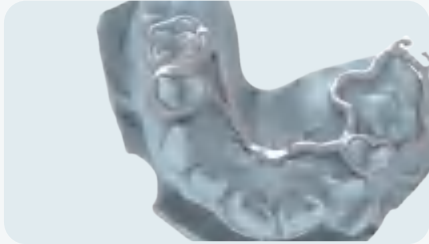


Innovation



Customization

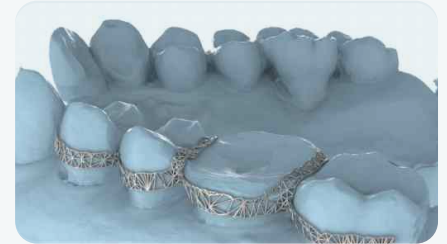
Case Studies



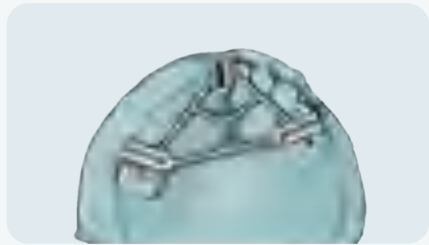
Appliances for maxillary molar distalization



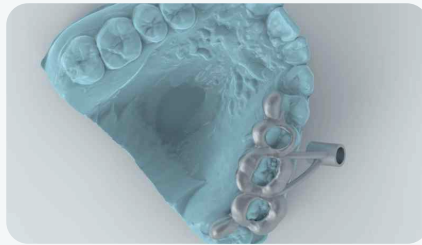
Band & Buccal tube



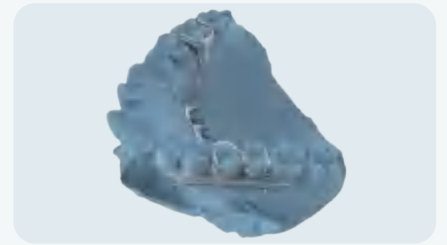
Periodontal splint



Surgical guide for guiding plane preparation



Surgical guide for orthodontic Micro Implant anchorage



Posterial propeller



Surgical guide for edentulous implant



Precision Attachment



Arch expander



Lingual fixed retainer



Space maintainer



Transpalatal Arch



Innovation-driven, Customer excellence

Nanjing Profeta Intelligent Technology Co., Ltd

Profeta Intelligent Technology has been established since 2014 and has received a National High-Tech Enterprise award. The core members have over 20 years R&D and business experience.

Profeta Intelligent Technology is one-stop solution provider for digital dentistry. We provide clinical software/tools, design software, metal 3D printers, auxiliary equipment and consulting service.

Profeta Intelligent Technology has close cooperation with Peking University and top dental labs in China. Furthermore, we are expanding the cooperation in America, Japan, South Korea, Singapore, France, Germany etc.

Profeta Intelligent Technology Co., Ltd, China

Web: www.profeta3d.com

Email: service@profeta3d.com

Add: No.12 Mozhou East Road, Jiangning, Nanjing, China

